

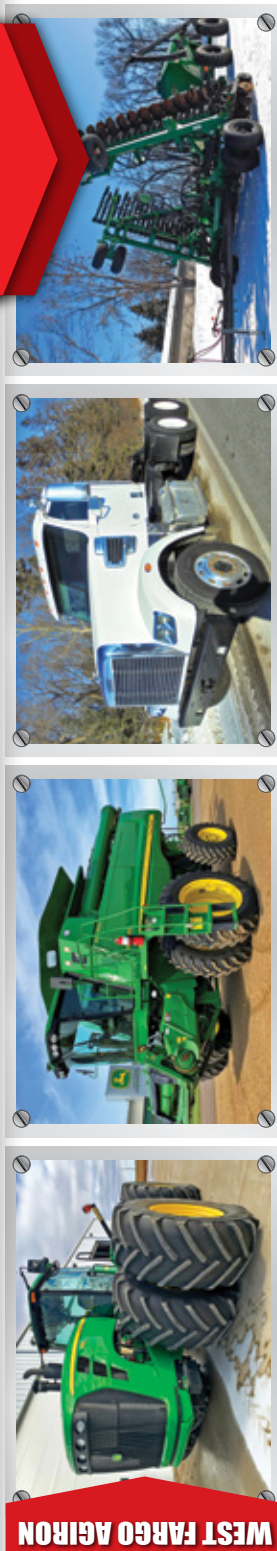
Agtron West Fargo

WEDNESDAY, MARCH 11 | 10AM

Red River Valley Fairgrounds, 1805 Main Ave. West, West Fargo, ND. Take exit 343 from I-94 W.



Built on Trust.



WEST FARGO AGIRON

COMING SOON

- Butenhoff Farms Retirement Auction | Thursday, February 27
- Chuck & Mary Brock Farm Retirement Auction | CLOSES: Monday, March 2
- Tim Brakke Farm Retirement Auction | Thursday, March 5
- Scott Shellito Farm Retirement Auction | CLOSES: Monday, March 16
- Sellie Brothers Farm Retirement Auction | Tuesday, March 17
- Braaten Farms Retirement Auction | Thursday, March 19
- Dennis & Kay Werre Farm Retirement Auction | Wednesday, March 25
- Driscoll & Driscoll Inc. Farm Retirement Auction | Thursday, March 26
- Ronald J. Oster Estate Farm Retirement Auction | CLOSES: Monday, March 30
- Leo & Linda Bartholomay Farm Retirement Auction | Friday, April 3

March 11
West Fargo

March 18
Mt. Pleasant

March 19
Litchfield

VIEW ALL AUCTIONS AT **SteffesGroup.com**

West Fargo, ND | 701.237.9173 | Grand Forks, ND | 701.203.8400 | Waiford City, ND | 701.580.2426 | Litchfield, MN | 320.693.9371 | Mt. Pleasant, IA | 319.385.2000 | Ames, IA | 515.432.6000 | Mason City, IA | 641.423.1947 | Sioux Falls, SD | 605.251.4444 | Lexington, NE | 402.237.4508



Steffes Group, Inc.
2000 Main Avenue East
West Fargo, ND 58078-2210



PRESORTED
FIRST CLASS
US POSTAGE
PAID
PERMIT #315
FARGO, ND

FERTILIZER EQUIPMENT

- 2014 Norwood stainless steel tender**, (7) compartments, 1,575 cu. ft., poke holes, Agri-Cover roll tarp, 30"x12" conveyor, 200 ton/hr., Kohler 35 hp. power pack w/wet kit hoses, wireless control, Digi-Star ST3400 scale, on Benke 53' trailer, spring susp., 255/70R22.5 tires at 90%
- 1988 Peterbilt 378 twin screw**, Cummins, 300 hp., 7 spd., spring susp., Willmar Loadrunner 16 ton twin compartment tender, hyd. discharge auger, 11-24.5 tires on steel rims
- 1984 IHC S2500 twin screw**, Cummins, 300 hp., 9 spd., spring susp., Willmar Loadrunner 16 ton twin compartment tender, rear hyd. discharge auger, 11-24.5 tires on steel rims
- Willmar Side Shooter multi-compartment fertilizer tender**, 24 ton, John Deere diesel power unit, on gooseneck 30' trailer

HAY & LIVESTOCK EQUIPMENT

- Enorossi RT7 inline wheel hay rake**, 7-wheel, hyd. lift, New
- 2013 John Deere 569 round baler**, MegaWide Plus hyd. pickup, Cover-Edge surface wrap only, bale push bar, variable core valve, 1000 PTO, 25.1L-16.1 flotation tires, 11,800 bales, S/N1E00569XHCD390449
- (32) Northeast Pipe & Panel buffalo freestanding panels**, 24'x5', New, sold price per panel
- (160) Northeast Pipe & Panel continuous fence panels**, 20'x5', 6-bar, w/clips & connectors, New, bundles of ten, sold price per panel
- (80) Northeast Pipe & Panel portable interlocking corral panels**, 10'x5', New, bundles of ten, sold price per panel

SEED TENDERS

- Parker 3620 Seed Chariot seed tender**, dual compartment, 180 degree swing conveyor, roll tarp, Honda gas motor, telescoping spout
- Willmar 1600 twin compartment seed tender**, 24', stainless steel, 500 unit cap., 8" belt, Honda 25 hp. motor, self-contained, on 25' military tandem axle 5th wheel trailer

GRAIN HANDLING & AERATION EQUIPMENT

- REM 2700 grain vac**, hose, cleanup kit, 540 PTO, 125 hrs., S/N2488
- HiCap grain cleaner**, electric
- 2014 Batco 1545 Field Loader belt conveyor**, self-contained hyd. mover kit, Kohler 29 hp. EFI gas motor, S/N159802
- 2014 Brandt 1040 auger**, 40"x10", Kohler 35 hp. motor, hyd. auger walker, S/N107899-14
- (2) Low speed centrifugal fans**, 10 hp., 1 phase, 230v, reconditioned
- Low speed centrifugal fan**, 15 hp., 3 phase, 230v, reconditioned
- Low speed centrifugal fan**, 20 hp., 3 phase, no starter, reconditioned
- Full floor aeration floors**, for 18', 21', 24', & 27' bins, aged inventory

GRAIN HANDLING & AERATION EQUIPMENT

- (30) bundles grain bin floor flashing**, (24) per bundle
- Pallets of asst. sheaves**, aged inventory
- Pallet of asst. sheaves**, gear boxes & bearings, aged inventory

SKID STEER ATTACHMENTS

- Hawz Attachments rock & brush grapples**, 68"-84", 3" spacing, for skid steer loaders, New
- Hawz Attachments rock buckets**, 68"-84", 3" tine spacing, for skid steer loader, New
- Hawz Attachments root grapples**, 72"-84", 6" tine spacing, for skid steer loader, New
- (2) Hawz Attachments tree & post pullers**, up to 8" posts, for skid steer loaders, New
- Hawz Attachments heavy duty brush mower**, 72", standard flow, for skid steer loader, New
- (4) Hawz Attachments weld-on quick attach plates**, for skid steer loader, New
- Low 1650 hyd. auger**, 9", 12", & 18" bits, skid steer loader quick tach, New
- Low 750 hyd. auger**, 12" bits, skid steer loader quick tach, New
- Low 750 hyd. auger**, 9", 12", & 15" bits, skid steer loader quick tach, New
- Stout XHD84-6 brush grapple**, skid steer loader quick tach, New
- Stout HD72-FB grapple bucket**, skid steer loader quick tach, New
- Stout HD72-8 brush grapple**, skid steer loader quick tach, New
- Stout HD72-4 brush grapple**, close-tine, skid steer loader quick tach, New
- Stout HD72-3 rock bucket grapple**, skid steer loader quick tach, New
- Stout HD72-3 rock bucket/brush grapple combo**, open end, skid steer loader quick tach, New
- Stout 66-9 brush grapple**, skid steer loader quick tach, New
- Stout tree and post puller**, skid steer loader quick tach, New
- Stout grapple attachment add-on**, New
- Stout add-on fork grapple**, New
- Redline double-tine bale spear**, New
- Redline tree & post puller**, New
- Redline snow pusher**, 96", New
- Redline snow buckets**, 84"-108", New
- Redline dirt bucket**, 74", New
- Redline rock bucket**, 72", New
- (3) Redline walk-through pallet forks**, 48" tines, New
- (2) Redline receiver plates**, New
- (4) Redline solid weld-on quick tach plates**, New
- (2) Hawz Attachments pallet fork extension sets**, 84", New
- (4) Maxam 10-16.5 tires**, 10-ply & (4) 12-16.5 tires, 12-ply, New

OTHER EQUIPMENT

- TCM forklift**, gas, 48" forks, 5,000-6,000 lbs., shows 1,073.6 hrs.

OTHER EQUIPMENT

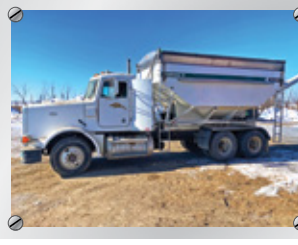
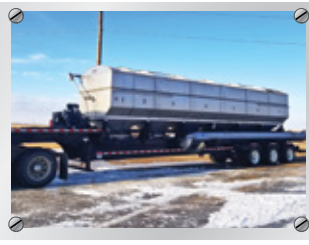
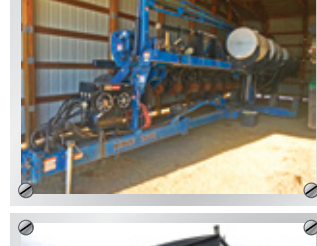
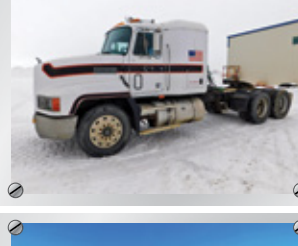
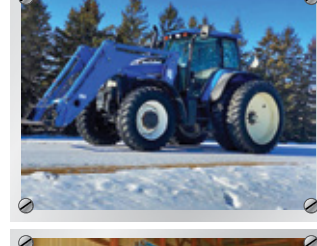
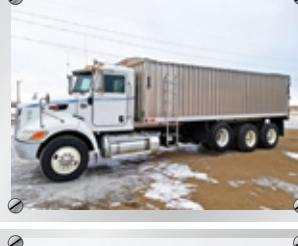
- (2) Man lift baskets**, 8'x3', fork pockets, New
- Industrias America asst. blades**, New
- (2) Hawz Attachments receiver hitch trailer movers**, New
- (2) 2000 Shop-built tandem axle dollies**, spring susp.

LAWN/GARDEN & ATV

- 2019 Z-Beast zero turn lawn tractor**, folding ROPS, B&S 25 hp. motor, 62" commercial deck, lights, 6 hrs.
- Herd 3-TTF-160 broadcast spreader**, 3 pt., 540 PTO
- John Deere front-mount 36" snowblower for lawn tractor**
- Beeline walk-behind stump grinder**, Honda GX390 gas motor
- 2006 Polaris Sportsman ATV**, 4x4, 500cc, front & rear racks, rear hitch, 5,975 miles

FARM SUPPORT, TIRES & PARTS

- F/S Mfg. 3,000 gal. cone bottom poly tank**, 2" valve, stand
- Leeson motors**, high & low speed; aged inventory: (6) 7&10 hp.; (5) 1-1/2 to 15 hp.; (6) 1-1/2 to 10 hp.; (6) 3 to 15 hp.
- (4) Firestone 480/80R42 tires on John Deere straddle dual rims**, approx. 50%, off John Deere 9760 combine
- Set (4) 650/65R38 flotation tires on 10-hole rims**, fits 1074 RoGator
- John Deere power tailboard**, includes all hoses, John Deere hyd. pump and bank, fits 50/60/70 Series combines, 2,300 total sep. hrs. on tailboard, New paddles and fins 500 hrs. ago



SteffesGroup.com

STEFFES

Contact auctioneers for owner information, new consignments, or changes at 701.237.9173 or 800.726.8609.